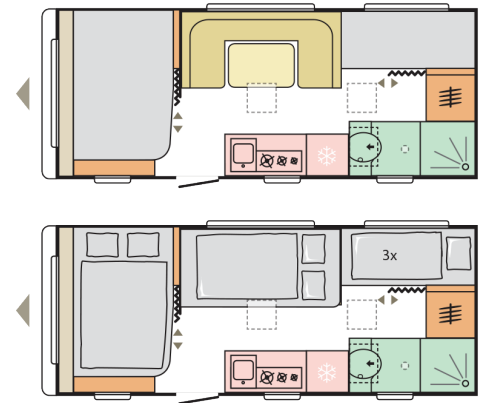


Altea

552 PK SPORT



ADRIA
Living in Motion



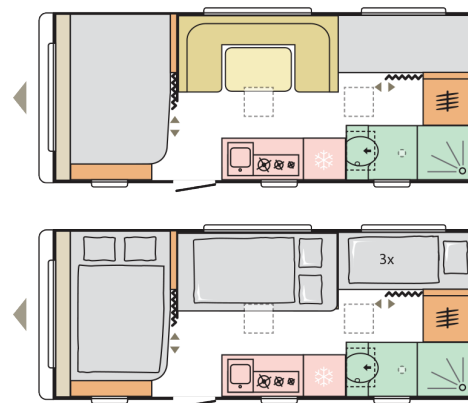
Dimensions & Weights	
Total length including drawbar (mm)	7610 (25'0")
Body length (mm)	6312 (20'8")
Internal length (mm)	5512 (18'1")
Total width (mm)	2356 (7'9")
Internal width (mm)	2170 (7'1")
Total height (mm)	2680 (8'9")
Internal height (mm)	1950 (6'5")
ATM Weight (kg)	1920*
Tare Weight (kg)	1470*
Payload (kg)	450*
Maximum Allowable Hitch Weight (kg)	150*
Fresh water storage (L)	130
Chassis	
Number of axles	1
AL-KO hot dipped galvanised chassis	✓
AL-KO independent rubber suspension (IRS) axle	✓
AL-KO shock absorbers	✓
AL-KO over-run braking system	✓
AL-KO anti-sway coupling	✓
AL-KO reinforced wind-down stabiliser legs	✓
AL-KO 8 inch jockey wheel	✓
Drawbar cover, impact resistant ABS	✓
Alloy wheels	✓
Tyre size	215/70R15C
Spare wheel	✓
Pull-out entry step	✓
Caravan Body	
Finish - Polyester sealed FRP	✓
Insulation - Combination of XPS styrofoam and EPS styropor to floor, walls and roof	✓
Front & rear walls - Impact resistant ABS	✓
Side walls & roof - Structural sandwich panel with hail resistant FRP exterior & breathable kiln dried plywood interior	✓
Floor - Structural sandwich panel with breathable kiln dried plywood lower & upper layers, plus insulative central core	✓
Windows - Double glazed acrylic windows with integrated privacy blinds, flyscreens and decorative curtains included	✓
Aluminium checker plate to side walls	✓
Silver 'Sport' look ABS body trim to bottom of side walls, front wall & rear bumper	✓
Entry door 2-part with integrated flyscreen (51cm wide)	✓
Luggage door on driver side (light dimensions)	725 x 275mm
Roof hatch, clear with day/night blind & flyscreen (to living area)	2
Cassette awning, wind-out style	4 x 2.5m

Altea

552 PK SPORT



ADRIA
Living in Motion



Interior	
Number of berths	6
Forward French bed (L x W, cm)	200 x 140
Mid-ship cafe style dinette/bed conversion (L x W, cm)	203 x 97
3x Bunk beds (L x W, cm)	196 x 76
Kitchen	
Cooktop with 12V starter, includes 3x burners and hinged glass cover	✓
Oven and grill combination (gas) with 12V starter	✓
Fridge/freezer 3 way MES (12V, 240V, gas)	189 litres
Kitchen sink, stainless steel with flickmixer	✓
Microwave oven	✓
1kg Dry chem powder fire extinguisher & smoke alarm	✓
Bathroom	
Ensuite with separate shower/toilet	✓
Shower fully enclosed with flickmixer	✓
Acrylic hand basin (fold-down) with flickmixer	✓
Cassette toilet with electric flush	19.3 litres
Plumbing	
Truma BN14 gas/electric hot water system	14 litres
Standard water filler (key lock)	✓
Pressurised town water connection	✓
Electrical Equipment	
House battery, deep cycle fully sealed	100Ah
Battery charger	15 Amp
LED lights throughout	✓
240V double power points throughout	✓
External 240V power inlet and outlet	✓
External 12V power outlet, coaxial aerial outlet & USB charge outlet	✓
Awning LED light	✓
12 pin trailer plug & breakaway system	✓
Heating/Cooling	
Air conditioning system 2.4kW Truma Saphir Comfort RC	✓
Gas Equipment	
Gas cylinders, located in lockable front boot	2x 4.0kg
External BBQ gas bayonet point	✓
Audio/Video	
19" HD LED TV/DVD (mounted in living area)	✓
Winegard Sensar antenna	✓
Stereo with CD/MP3/WMA/USB with AM/FM tuner	✓
Speakers internal x2	✓

*Weights & measurements are indicative only.

Note: Specifications can change due to continuous improvement and are subject to change without notice.