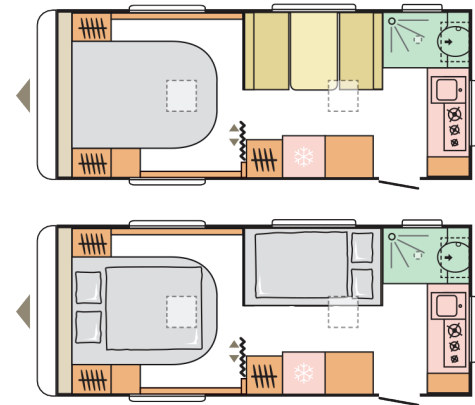


# Adora

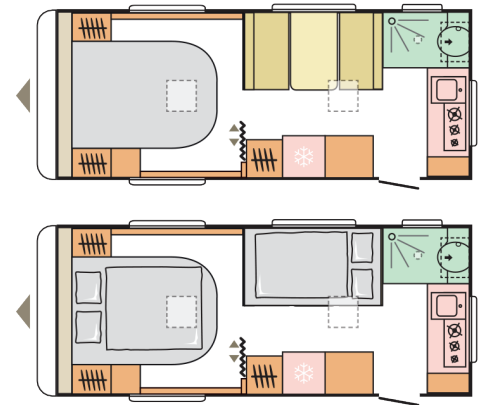
## 542 PH SPORT



Dimensions & Weights	
Total length including drawbar (mm)	7400 (24'3")
Body length (mm)	6070 (19'11")
Internal length (mm)	5588 (18'4")
Total width (mm)	2390 (7'10")
Internal width (mm)	2170 (7'1")
Total height (mm)	2710 (8'11")
Internal height (mm)	1950 (6'5")
ATM Weight (kg)	2050*
Tare Weight (kg)	1610*
Payload (kg)	440*
Maximum Allowable Hitch Weight (kg)	150*
Fresh water storage (L)	130
Chassis	
Number of axles	1
AL-KO hot dipped galvanised chassis	✓
AL-KO independent rubber suspension (IRS) axle	✓
AL-KO shock absorbers	✓
AL-KO over-run braking system	✓
AL-KO anti-sway coupling	✓
AL-KO reinforced wind-down stabiliser legs	✓
AL-KO 8 inch jockey wheel	✓
Drawbar cover, impact resistant ABS	✓
Alloy wheels	✓
Tyre size	215/70R15C
Spare wheel located in front boot	✓
Pull-out entry step	✓
Caravan Body	
Finish - Polyester sealed FRP	✓
Insulation - Combination of XPS styrofoam and EPS styropor to floor, walls and roof	✓
Front & rear walls - Impact resistant ABS	✓
Side walls & roof - Structural sandwich panel with hail resistant FRP exterior & breathable kiln dried plywood interior	✓
Floor - Structural sandwich panel with breathable kiln dried plywood lower & upper layers, plus insulative central core	✓
Windows - Double glazed acrylic windows with integrated privacy blinds, flyscreens and decorative curtains included	✓
Aluminium checker plate to side walls	✓
Silver 'Sport' look ABS body trim to bottom of side walls, front wall & rear bumper	✓
Security entry door with security mesh and integrated flyscreen	✓
Luggage door on driver side (light dimensions)	725 x 275mm
Roof hatch, clear with day/night blind & flyscreen (to living area)	2
Cassette awning, wind-out style	4.0 x 2.5m

# Adora

## 542 PH SPORT



Interior	
Number of berths	3
Forward north/south island bed (L x W, cm)	190 x 154
Mid-ship club lounge/bed conversion (L x W, cm)	188 x 98cm
Kitchen cabinets & drawers with sink cover/cutting board	✓
Kitchen	
Cooktop with 12V starter, includes 3x burners and hinged glass cover	✓
Oven & grill combination, Thetford Duplex (gas) with 12V starter	✓
Fridge/freezer, Thetford N4175A AES (12V, 240V, gas)	165 litres
Kitchen sink, stainless steel with flickmixer	✓
Microwave oven	✓
Fire extinguisher, 1kg dry chem powder	✓
Smoke alarm	✓
Bathroom	
Ensuite with combined shower/toilet, shower curtain & separate shower head	✓
Bathroom cabinet with acrylic hand basin (fold-down), flickmixer & mirror above	✓
Toilet, Thetford C402-C cassette with electric flush (12volt)	19.3 litres
Plumbing	
Water Heater, Truma Combi 4E CP plus, combination gas/electric heater & hot water unit	10 litres
Water filler, for water tank supply (key lock)	✓
Water filler, for pressurised town water connection	✓
Electrical Equipment	
House battery, deep cycle fully sealed	100Ah
Battery charger	15 Amp
LED lights throughout	✓
Ambient LED lights over cupboards	✓
240V double power points throughout	✓
External 240V power inlet and outlet	✓
Awning LED light	✓
12 pin trailer plug & breakaway system	✓
Heating/Cooling	
Air Conditioner, Truma Saphir Comfort reverse cycle ducted a/c (2.4kW cooling, 1.7kW heating)	✓
Heater, Truma Combi 4E CP plus, combination gas/electric heater & hot water unit	✓
Gas Equipment	
Gas cylinders, located in lockable front boot	2x 4.5kg
BBQ gas bayonet fitting	✓
Audio/Video	
Television, 18.5" (47cm) HD LED TV/DVD (mounted in living area)	✓
Antenna, Winegard Sensor	✓
Bluetooth music receiver	✓
Speakers internal x2	✓

\*Weights & measurements are indicative only.

Note: Specifications can change due to continuous improvement and are subject to change without notice.